

Interior flooring

STONEWORLD

Everything you need in stone





Avonbridge



Contents

04 About us

06 Interior flooring

08 Stone flooring

10 Limestone flooring

16 Sandstone flooring

18 Travertine flooring

19 Slate flooring

20 Porcelain flooring

30 Oak flooring

36 Project insights

39 Stone care

39 Masonry stone cutting

About us

Our story

Stoneworld is a family business based in Oxfordshire with over 20 years of experience. We all have a passion for stone and are always on the look-out for exceptional new products to add to our range that will inspire you in your interior and exterior projects! With our wealth of knowledge and experience in all aspects of stone we can advise you on stone selection, laying patterns, suitability, etc. We are always happy to share our expertise.

Our workshop

Our stone pieces are produced with craftsmanship and care in our factory in Great Milton, Oxfordshire, to ensure quality. Whether you require bespoke stone cutting or complicated design work, we are always happy to help you achieve your design aspirations. Our high-tech masonry workshop team are highly skilled, using the latest stone cutting machinery. This enables us to offer solutions for any architectural, sculptural or landscaping requirement.

Innovation takes courage

Our masonry factory has been constantly advancing in technological development over the last 20 years. We are continually researching what machinery is being developed to enable the work that we do to be produced more efficiently. Our investments in the latest technology enable us to fulfil any projects however ambitious, artistic & precise our customers' requirements are. It also puts us way ahead of the average worktop fabricator. All our work is done accurately in our factory using precision cutting equipment.

The artistry of exceptional craftsmanship

Aside from our innovative technology, it's our team of people who really makes a difference. Our factory workers are all highly skilled colleagues who love to go the extra mile to create extraordinary things. Our investment in the right kit for the job makes them very proud of the work they can produce. No task is too ambitious. There are also a few jobs that our skilled men need to do by hand, such as polishing.



Travertine





Interior Flooring

The natural choice
for quality flooring

Stoneworld have a vast range of high-quality flooring options available for you to choose from.

We have styles to suit contemporary & traditional homes in many formats. Choose from natural stone floor tiles, porcelain tiles or oak flooring.

Our interior showroom in Great Milton has a vast display area to help visualise your options. Ask for our advice on which product will suit your project best.

Stone flooring





We have an
extensive range
of stone flooring
to suit any project.

**Our range includes sandstone,
limestone, travertine and slate.**

We are careful to only source the best quality products from around the world. This ensures our customers can enjoy the results of fine quality products in their homes for years to come.

Contemporary or traditional, we have styles to suit both in many formats. Furthermore, we offer stone from trusted sources that we have personally checked to ensure ethical trading practices.

Limestone flooring

Arctic

A honed and tumbled limestone tile available in grey or black. Natural tone variations add character.

Format:

600 x 400 x 20mm.



Black



Grey

Bayeux

A stunning black Indian limestone with a time-worn appearance. The surface is a smoothed riven finish and the handcut edges have the appearance of a tumbled edge after grouting is completed. This limestone flooring tile is very dense, requiring little sealing or ongoing maintenance. Suitable for both indoor and outdoor use.

Format:

500mm x flowing lengths x 20mm.

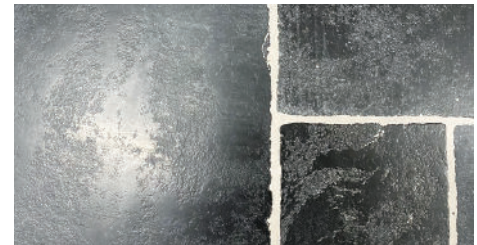
Single Sizes:

700 x 550 x 20mm, 550 x 270 x 15mm,
550 x 400 x 15mm, 550 x 590 x 15mm.

Small Opus Mix 15mm thick comprising
four tile sizes: 183 x 183mm, 183 x 370mm,
370 x 370mm, 370 x 550mm.

Large Opus 20mm thick comprising four
tile sizes: 275 x 275mm, 275 x 550mm,
550 x 550mm, 550 x 830mm.

270/400/550mm widths x random
lengths x 20mm.



Bayeux

French limestone collection

AMPHILLY

French limestone featuring beige to grey tones with an attractive rubbed finish.

Format:

400mm or 500mm wide running or free lengths x 20mm thick.



Amphilly

CHAMESSON

French limestone floor tiles. Beige and cream tones with attractive grey markings.

Format:

400mm wide running lengths x 20mm thick.



Chamesson

PIERRE DE BOURGOGNE

A stunning French limestone with beige to golden brown tones throughout. Many interesting tonal and textural variations occur within the tiles, and together they create a beautiful tapestry of the highest quality stone floor tiles to adorn your home.

Format:

400mm wide free lengths x 15mm thick.



Pierre de Bourgogne

Moleanos

High quality Portuguese Limestone having great density and purity of colour. This is a beautiful material to use throughout the home, which will give elegance to many different interior styles. Pale cream tiles have subtle fine grey fossil markings throughout giving surface variation. Tiles have a smooth honed surface.

Format:

600 x 600 x 15/20mm, 600 x 400 x 20mm,
800 x 800 x 20mm.

Antique barn range

A beautiful range of limestone floor tiles featuring a softly riven surface and tumbled edges for a rustic look in the home.

Format:

845 x 560 x 22mm, 560 x 560 x 22mm,
560 x 275 x 22mm, 275 x 275 x 22mm.

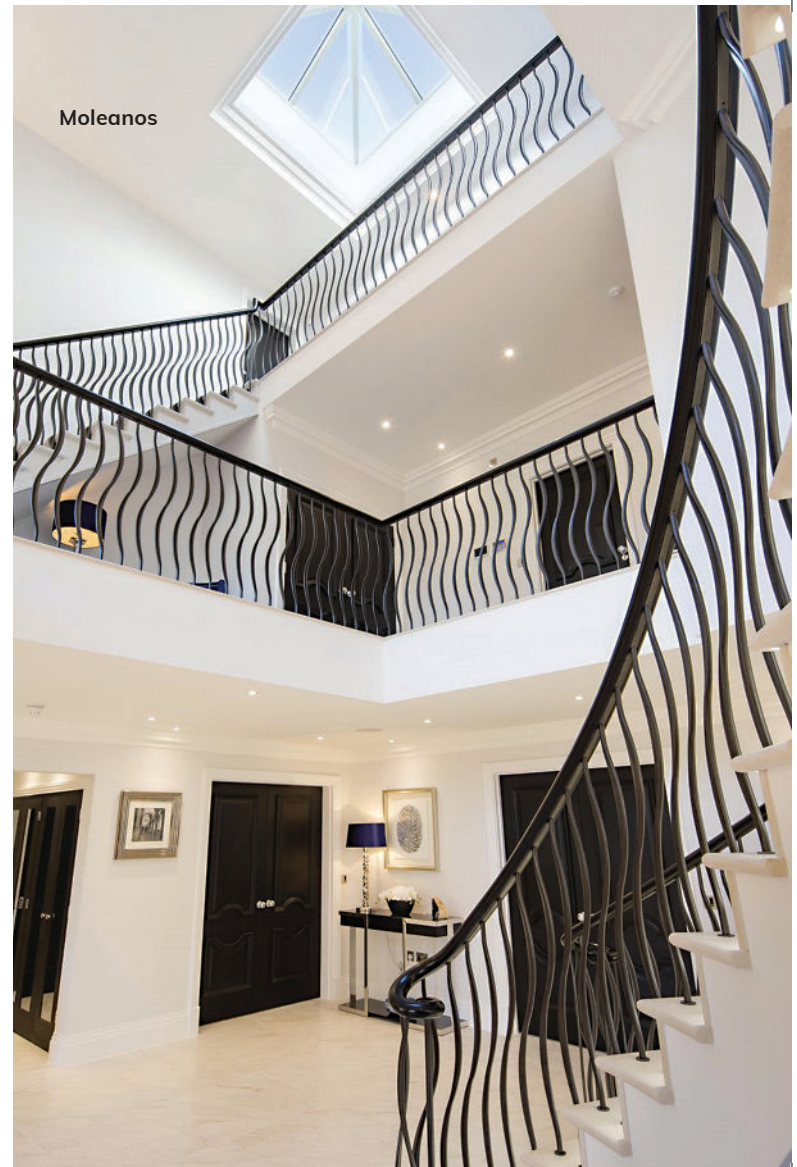
Sold per sqm in four tile multiples
(one of each size). Lay in a random pattern.



Tuscan



Tundra



La Roche and La Roche Luna

LA ROCHE

Pale beige and creamy tones, with interesting markings. A dense, hard and durable limestone, with a classic appearance. The straight cut edging makes it appropriate for all homes whether traditional or modern. Two versions to choose from.

La Roche Fine Honed and Brushed Surface with a Sawn Edge has a gently textured surface. The sawn edge enables a close pointing joint.

Format:

900 x 600 x 18mm.

La Roche Tumbled Flooring with softly tumbled edges for a more timeworn traditional look.

Format:

900 x 600 range: Grand Opus Romano Pattern repeats every 2m² comprising four tile sizes:

600 x 900mm, 600 x 600mm, 600 x 300mm, 300 x 300mm.

600 x 400 range: Opus Romano Pattern repeats every 1m² comprising four tile sizes:

600 x 400mm, 400 x 400mm, 400 x 195mm, 195 x 195mm.

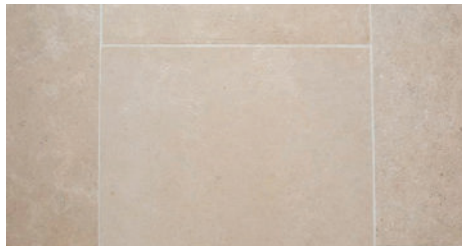
LA ROCHE LUNA

A gentle grey version of our La Roche limestone flooring. Tumbled Finish available in a large Opus pattern.

Format:

900 x 600 x 18mm, 600 x 600 x 18mm, 600 x 295 x 18mm, 295 x 295 x 18mm.

Honed and brushed with a straight cut edge 900 x 600 x 18mm tiles.



Brushed



Tumbled



Luna

Avonbridge

Avonbridge is a richly coloured limestone floor tile with golden tones, which has been tumbled and lightly sandblasted to give a smooth aged and honed appearance. This floor tile suits many different settings in both traditional and contemporary designs. Rippled or straight edge available.

Format:

500mm widths x 450, 550, 650,
750 or 850mm lengths x 17mm thick.

Best laid in running strips or in
brick formation.

Also available: fine sandblasted
surface with a sawn edge.

Format project packs (20sqm total)
comprising: 845 x 560 x 20mm,
560 x 560 x 18mm, 560 x 275 x 18mm,
275 x 275 x 18mm.



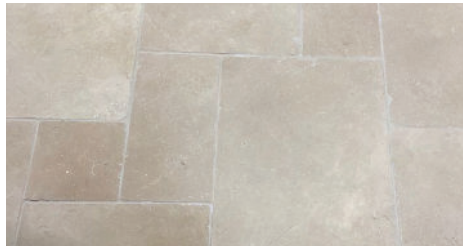
Avonbridge

Gala

Egyptian limestone. Soft beige and cream tones throughout characterise this stone. Tumbled tiles giving a softly worn patina to tile edges and surfaces.

Format:

Small Opus pattern comprising four tile sizes:
600 x 400 x 18mm, 400 x 400 x 18mm,
400 x 200 x 18mm, 200 x 200 x 18mm.



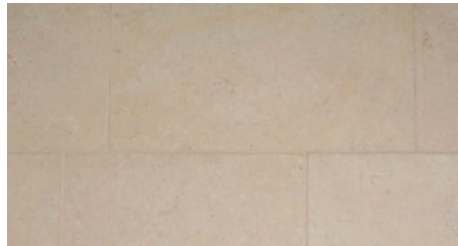
Gala

Rutland

Rutland British limestone floor tiles are beige and cream coloured with beautiful shell markings throughout. Invest in the enduring beauty and elegance of a British stone for your home, and add authentic character. Using a British stone will significantly reduce the carbon footprint on your project.

Format:

400 or 500mm wide by random lengths.
Tiles are 20mm thick. Best laid in strips.



Rutland

Waterloo

Dark grey and mid grey tones. Tumbled giving a softly worn patina to tile edges and surfaces.

Format:

600 x 500mm x 20mm thick.
Other sizes are available to order.



Waterloo

Sandstone flooring

Antique barn range

A beautiful range of sandstone floor tiles featuring a softly riven surface and tumbled edges for a rustic look in the home.

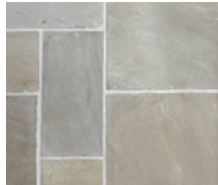
Format:

845 x 560 x 22mm, 560 x 560 x 22mm,
560 x 275 x 22mm, 275 x 275 x 22mm.

Sold per sqm in four tile multiples
(one of each size). Lay in a random pattern.



Silver Grey



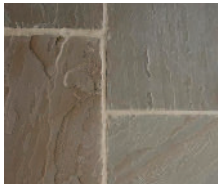
Cotswold



Noir



Golden Brown



Country



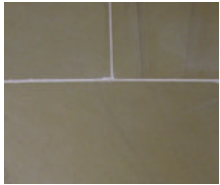
Antique Cotswold

Aurora range

Aurora is a contemporary range of sandstone floor tiles with a sawn edge and smooth surface.

Format:

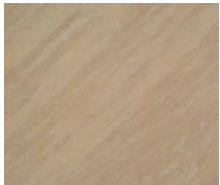
600 x 400 x 20mm.



Autumn Bronze



Black



Harvest



White



Travertine flooring

Travertine flooring available in three styles: Light Travertine tile with a chiselled and tumbled edge, Classic Unfilled Travertine, Persian Beige Honed and Filled Travertine tile.

Format:

610 x 406mm.

Opus pattern comprising four sizes:

600 x 400mm, 400 x 400mm,

400 x 200mm, 200 x 200mm.

All 12mm thick.



Travertine Persian Beige



Light



Classic Unfilled



Persian Beige

Slate flooring

Beautiful slate floor tiles in three colours. Choose from grey, black or green toned natural stone tiles of exceptional quality sourced from Brazil. Available in natural cleft finish with a gentle textured surface, or honed with a low sheen, smooth surface.

NERO

900 x 600 x 15mm
(Riven only available in this size).
600 x 300mm, 600 x 400mm,
400 x 400mm, 600 x 75mm.

CINZENTO

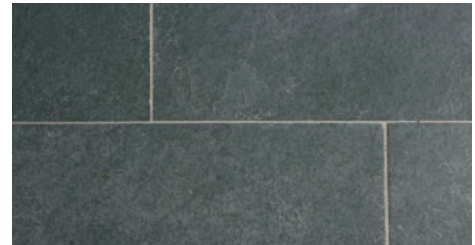
600 x 600mm, 600 x 400mm,
400 x 400mm.

VERDE

600 x 400mm, 400 x 400mm.
10mm thick except where stated.



Nero



Cinzento



Verde

Large Format Porcelain Sheet — Joy

Porcelain flooring



We have a wide range of porcelain flooring options for you to choose from.

Porcelain tile flooring products have developed greatly in recent years, and offer an exciting alternative to traditional natural materials.

Innovations in the industry have enabled the production of realistic looking alternatives to stone, concrete, wood and marble.

Porcelain tiles are hard wearing, low maintenance and above all, beautifully realistic. New ranges are constantly being added. Visit our showroom in Great Milton to see the whole range.

NB All interior porcelain tiles are 10mm thick unless otherwise stated.

* Some ranges are especially recommended for swimming pool lining tile projects.

Dordogne

Limestone effect

Format:

Size: 150 x 150mm, 305 x 305mm,
408 x 614mm, 458 x 458mm.



Biscuit



Caramel



Ivory



Cendre

Cabane

Wood grain effect

Format:

Size: 1200 x 200mm.



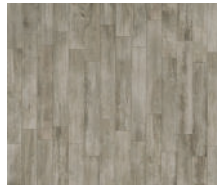
Sand



Bark



Fog



Shell



Stone



Tobacco

Stage

Wood grain effect

Format:

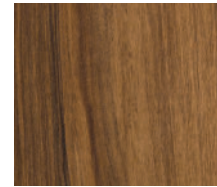
Size: 200 x 1200mm.



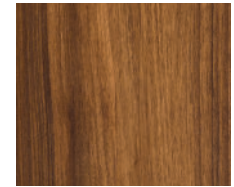
Bolshoi



Broadway



Globe



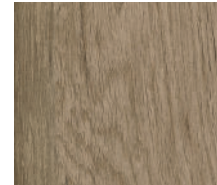
La Fenice



La Scala



Metropolitan



Opera



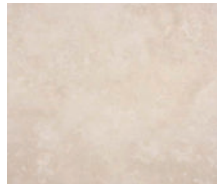
Royal

Renaissance

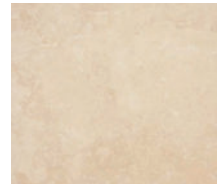
Travertine effect

Format:

Size: 300 x 300 mm, 300 x 600 mm,
450 x 450mm, 600 x 600mm.



Ivory



Navona



Silver

Board

Riven stone effect

Format:

Size: 604 x 1208mm, 604 x 90mm,
604 x 604mm, 302 x 604mm.



Chalk



Dust



Inkwell



Paper



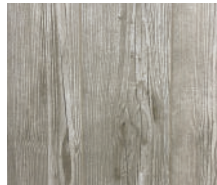
Graphite

Kauri

Wood grain effect

Format:

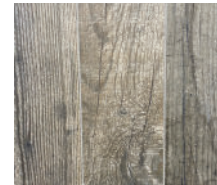
Size: 138 x 830mm.



Bright



Essential



Mulled



Natural



Golden

Muse

Marble effect

Format:

Size: 800 x 800mm,
600 x 600 mm, 300 x 300mm.



Calacatta



Carrara



Marfil

Icon

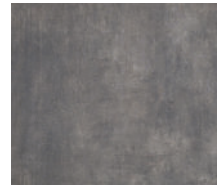
Concrete effect

Format:

Size: 600 x 1200mm,
800 x 800mm, 450 x 950mm,
600 x 600mm, 300 x 600mm.



Dove Grey



Jet Black



Gunpowder



Taupe Back



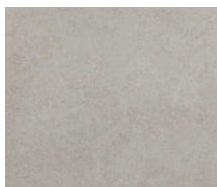
Bone White

Belgravia

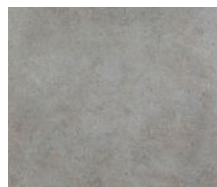
Limestone effect

Format:

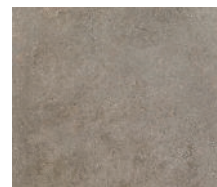
Size: 1200 x 1200mm*,
600 x 1200mm*, 800 x 800mm,
600 x 600mm, 600 x 300mm.



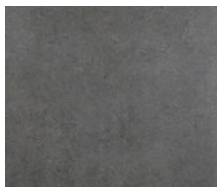
Cloud



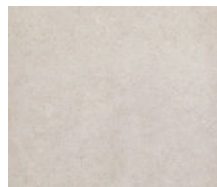
Moon



Space



Thunder



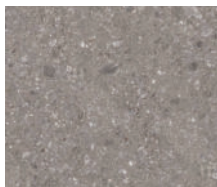
Snow

Pietro Di Gre

Breccia effect

Format:

Size: 1200 x 1200mm,
600 x 1200mm, 600 x 600mm.



Anthracite



Bianco



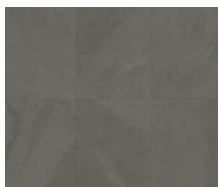
Grigio

Rio

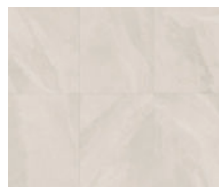
Slate effect

Format:

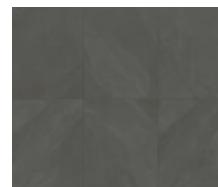
Size: 600 x 1200 mm*, 800 x 800mm,
600 x 600mm, 300 x 600mm.



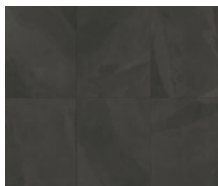
Elephant Grey



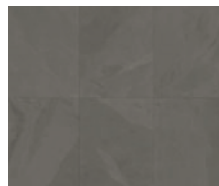
Oxford White



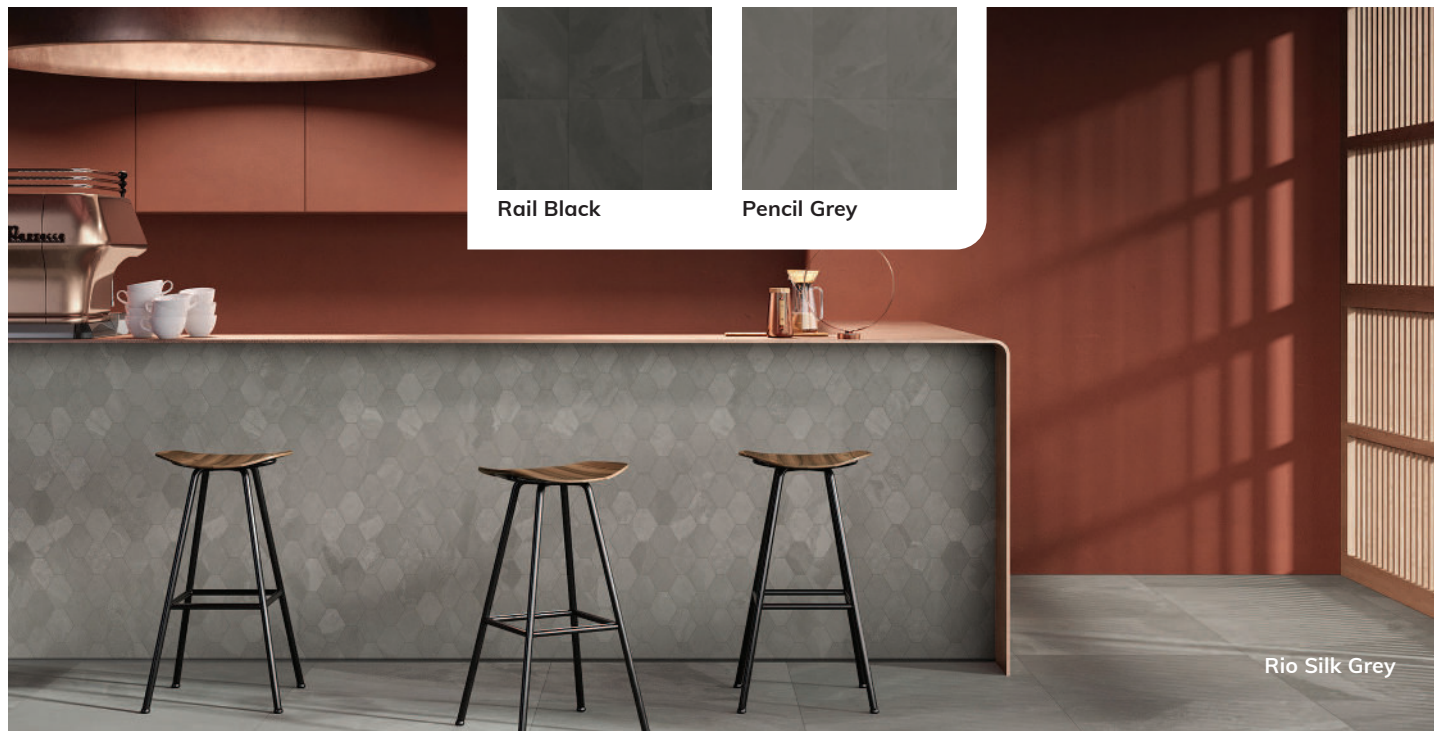
Silk Grey



Rail Black



Pencil Grey



Rio Silk Grey

Loire

French limestone effect

Format:

Size: 604 x 1208mm,
900 x 900mm, 604 x 906mm,
604 x 604mm, 302 x 604mm.



Beige



Blanc



Gris



Ocre

Midtown

Textured concrete effect

Format:

Size: 604 x 1208mm, 900 x 900mm,
604 x 604mm, 302 x 604mm.



Brooklyn



Harlem



Queens



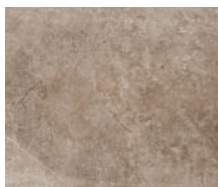
Soho

Evo

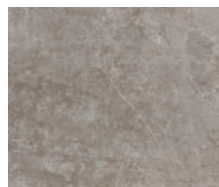
Polished stone

Format:

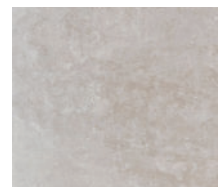
Size: 600 x 600 x 11mm,
800 x 800 x 11mm.



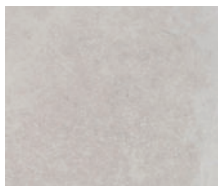
Dune



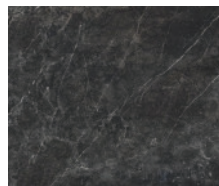
Natural



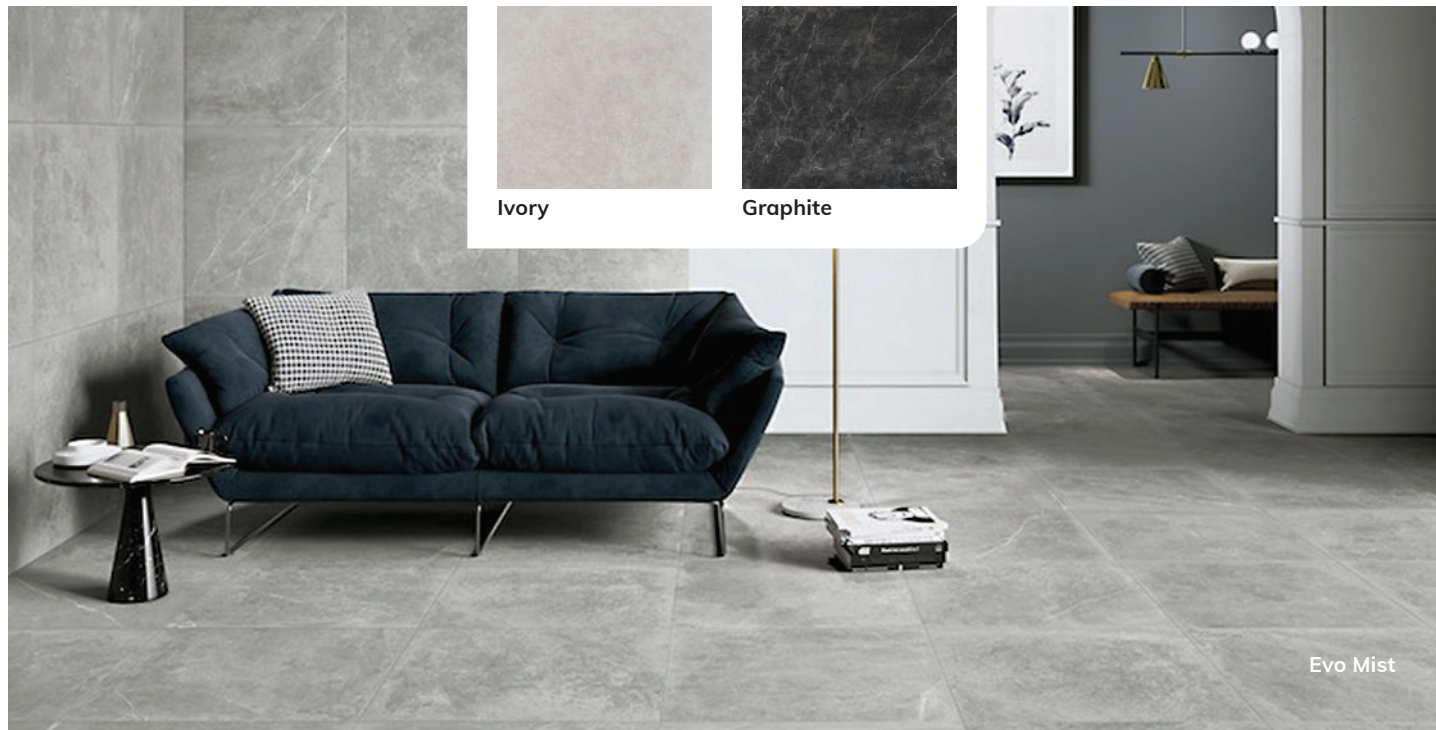
Mist



Ivory



Graphite



Evo Mist

Oak flooring

Brushed Natural



High quality
oak wood flooring
sourced from
sustainable
European forest.

(hf) hand finished.

Our wood has extremely low VOC glues, with a high consideration to the environment and safety. Complies with EUTR No. 995/2010 regulations.

Our wood flooring is an engineered oak board measuring 20.5mm thick. This comprises a 6mm oak veneered top with a 14.5mm birch ply back.

The thicker board increases durability with enhanced resistance to contraction and expansion. Furthermore, each long side of the board is micro bevelled, enabling an extremely narrow joint between boards. This helps to prevent the accumulation of dust. These features create a superior low maintenance floor that will give many years of durable wear.

Eathorpe

Stylish 'industrial' finish that works well in contemporary schemes. The grain is visible plus a cross-grain pattern is a specific feature of this range.

Format:

140mm and 180mm widths, plus 140 x 560mm boards for herringbone pattern.



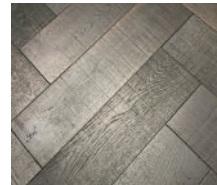
Flax



Sand (hf)



Scandi (hf)



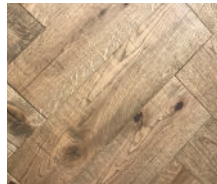
Umber



Walnut



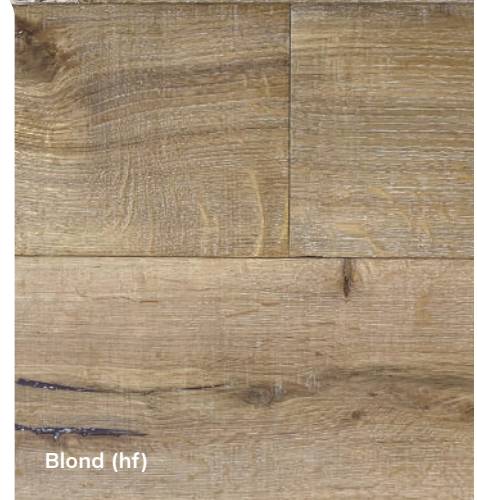
Hickory



Jute



Driftwood (hf)



Blond (hf)

Stratford

A timeworn appearance with a strongly visible grain. The boards have been aged by denting, then brushed for a grainier finish.

Format:

180mm, 220mm, 260mm wide.
Boards are 2200mm–2400mm long.



Mahogany (hf)



Molasses



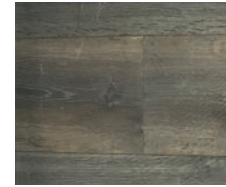
Umber



Ash



Driftwood (hf)



Gunpowder



Soot



Sable



Charcoal

Arden

Soft to the touch with a subtle grain. It has slightly more texture than our 'Brushed' range.

Format:

180mm, 220mm and 260mm widths.
Each board is 2200mm–2400mm long.



Blond (hf)



Clay



Flax



Hazelnut (hf)



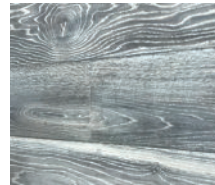
Jute



Maple



Sand



Smoke



Tobacco

Brushed

A slightly textured surface finished with UV oils.

Format:

180mm, 220mm or 260mm wide.
Boards are 2200mm–2400mm long.



Natural



White Oil



Light Smoked



Dark Smoked

Charlecote

A subtly revealed grain achieved with gentle brushing. This range has a smaller format, suitable for laying wood floors in a herringbone pattern.

Format:

120mm x 600mm boards suitable for herringbone pattern.



Mahogany



Blond (hf)



Blond



Natural



Tawny



Maple

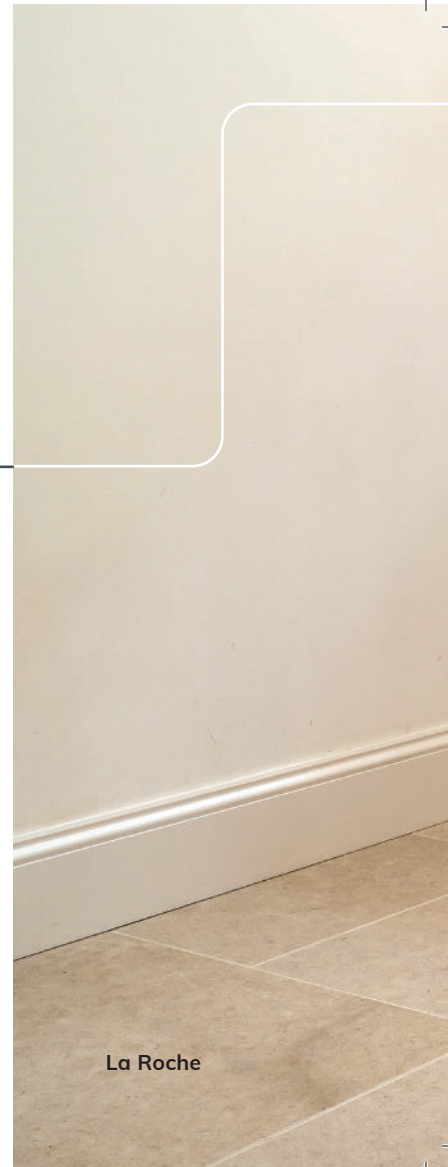


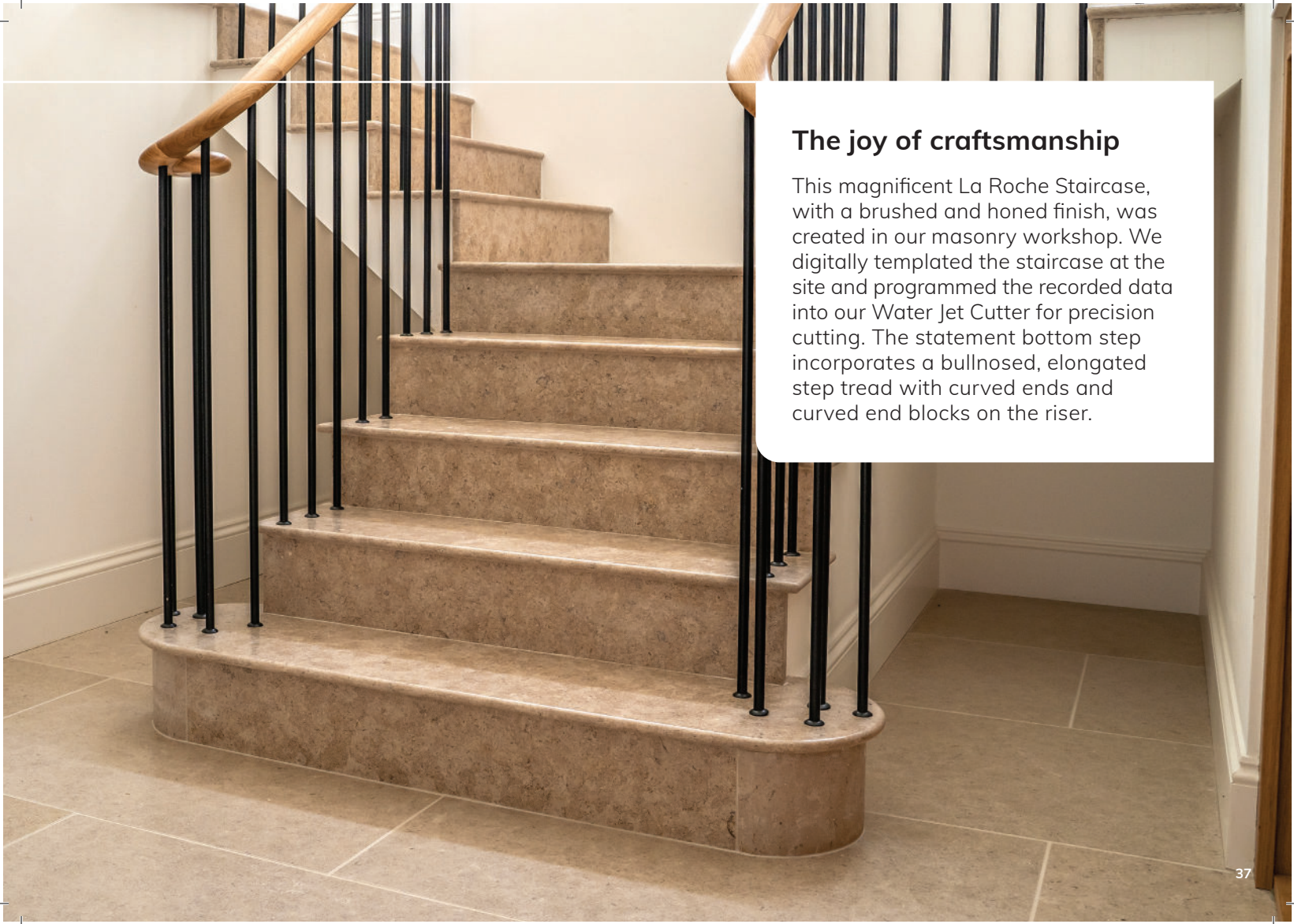
Tobacco

Project insights

Inside an extensive self-build project

An extensive self-build project with a superior finish? Get inspired by this project using several of our different stone materials and our beautiful oak flooring. Our masonry workshop cut and finished various stones exactly to the vision of the client.





The joy of craftsmanship

This magnificent La Roche Staircase, with a brushed and honed finish, was created in our masonry workshop. We digitally templated the staircase at the site and programmed the recorded data into our Water Jet Cutter for precision cutting. The statement bottom step incorporates a bullnosed, elongated step tread with curved ends and curved end blocks on the riser.

Project insights



It's all in the details

The beautiful hallway floor was created using La Roche Limestone, featuring a Spanish Black Marble accent tile. We achieved the pattern using our Water Jet Cutter, to precision cut each tile to the correct shape.



Luxury at your doorstep

Adjoining the limestone floor there is an area of oak wood flooring, named Natural Oiled Oak. Our range is exceptionally hard wearing quality. The interesting mix of materials adds a luxurious flare to the property. Our Natural Oiled Oak Wood Flooring is laid in a Parquet Pattern, to beautifully contrast against the La Roche Limestone Flooring.



Experts in bespoke design

Bespoke Grigio Piombo Lapitec Worktops were installed to both the Kitchen and Bathroom Vanity. We supply and fit a wide range of Worktop materials, all of which are displayed in our showroom in Great Milton.

Stone care

At Stoneworld we care about the afterlife of the products you buy from us. Like you, we want it to look great for years to come. Our Rob Parker's Best range has been scientifically developed to address the care and maintenance of all stone.

Find out more on www.robparkersbest.co.uk



Masonry stone cutting

Take your project to the next level! Our onsite masonry workshop can assist with stone and porcelain cutting, making installing much easier. Step treads, copings, etc can be cut to size and bull nosed for a professional finish. Ask at the time of ordering.



Everything you need in stone

📍 Stoneworld Oxfordshire Ltd,
Views Farm, Great Milton
OX44 7NW

✉ sales@stoneworld.co.uk

🌐 www.stoneworld.co.uk

📞 +44 (0)1844 279274