



STONEWORLD

3 Part Pool Copings

Everything you Need in Stone

www.stoneworld.co.uk

(01844) 279274

Views Farm, Great Milton, Oxfordshire, OX44 7NW

Moleanos Limestone Grills



Location: Suffolk

Stone: Moleanos Limestone

Standard sized grill, to be carved on a slope causing water to flow directly into the grill.

Front and rear pieces created flat, with pool edging 30mm lower than the rear of the grill

Grill carved to sit at an angle to front and rear pieces

Deck Level Pool

Location: Cornwall

Stone: Yellow Mint

Pool by: Pool Co Trewlawny

Specification:

Front and rear pieces made from 50mm stone, with half bullnosed front edge on front piece.

Front and rear pieces rebated 25mm to hold 250mm wide trough cover.

150mm x 8mm slots cut using waterjet with half slot in each end to hide joint.



Shadow Basalt Continuous 3 part Coping Deck Level Pool

Location: Leamington Spa

Stone: Shadow Basalt 30mm Flamed

Pool by: Clearwater Pools

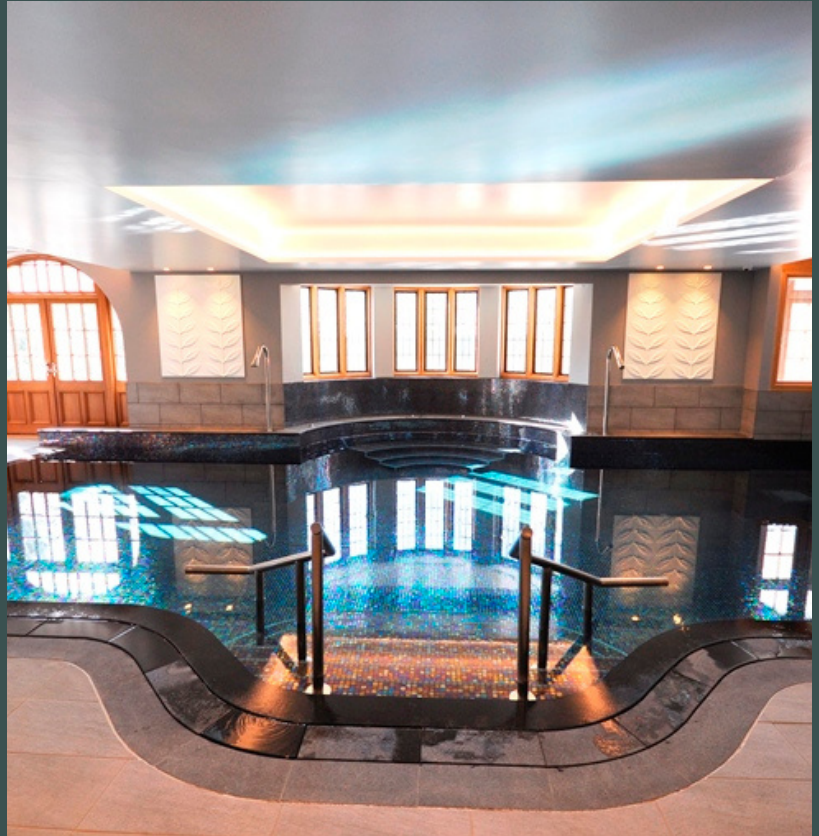
Specification:

Front and rear pieces 30mm thickness with front piece including large pencil roll edge. Both rebated 20mm in depth.

25mm wide slots carved into rebates to allow rapid water release, as all water went down 8mm slots each side of the cover.

Trough cover rebated on each underside to remain in position, cut 16mm narrower - 8mm each side - to form slots. for water to escape.

Fall of flooring behind 3 part coping towards pool to capture excess water egress.



White Mint Pool & Spa



Location: Minster Lovell
Stone: White Mint Honed

Specification:

White Mint Honed pool edgings and flooring with steps and window sills, leading to Fossil Mint Tumbled terrace outside of the pool house.

Grills in black plastic with front and rear pieces of the coping produced in 40mm White Mint with a half bullnose.

Floors created in 20mm White Mint Honed, notice inspection covers hidden in carved stone.

Pool templated on site, with each section mapped independently with each individual piece and location.

Spa copings were produced using 40mm Portuguese Alenjento Black granite with a large pencil roll.

White Mint Single Piece Slot Coping



Location: Beaconsfield

Stone: White Mint

Specification:

Innovative, bespoke solution using a single piece slot coping. Slot incorporated into a single piece of stone creating pool edge and bridging the trough, allowing water to pass through.

Carved using StoneGenie 7 axis robot using 40mm thick White Mint, rising to 50mm behind the slot.

Strengthened by leaving tags attaching front and rear pieces, with additional strength from stainless steel under each piece.

Project has now been in place for 10 years, proving a successful and durable solution.

Shadow Basalt Air Vents

Location: Liphook
Stone: Shadow Basalt

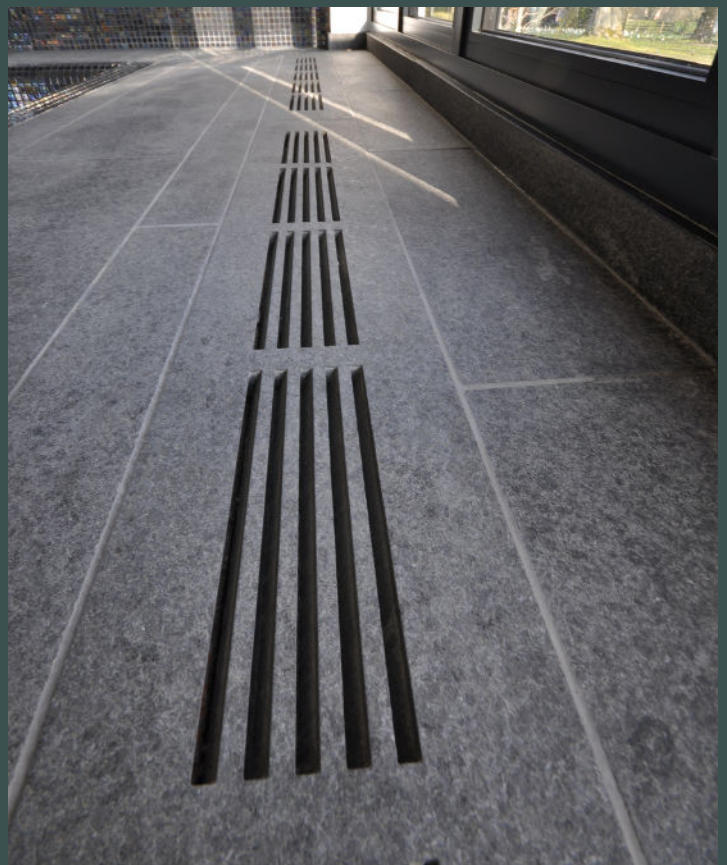
Specification:

Air vents to be cut in stone, improving the look of the project.

3mm stainless steel plate cut to match carved stone vents for added strength, attached to the underside of the stone

Pool lined with matching porcelain tiles with 30mm Shadow Basalt copings incorporating 25mm overhand and pencil roll top and bottom.

Skimmer lids and light covers incorporated into stone flooring, leading to outside terrace with bespoke, wide steps created in 900x400x300mm stone with bullnose.





STONENWORLD

Everything you Need in Stone

www.stoneworld.co.uk

(01844) 279274

Views Farm, Great Milton, Oxfordshire, OX44 7NW